



CJ Waterhouse Co Ltd

MATERIALS HANDLING ▼ WEIGHING SYSTEMS ▼ PROCESS SOLUTIONS
PLANT CONTROL ▼ AUTOMATION ▼ BESPOKE MACHINERY

Intake & Bulk Storage Systems



www.cjwaterhouse.co.uk

Tel: +44 (0) 1636 610792



Bulk Raw Material Intake Systems



Raw materials intake systems can be supplied in a variety of configurations to suit your specific materials, processes and storage requirements.

For materials supplied by tanker a pneumatic intake system is generally used to convey materials from the tanker directly into the storage silos. These systems can either utilise a truck mounted blower or a dedicated site mounted unit. Such systems can be used to load either a single storage vessel or a number of silos via diverter valves or pipework connection manifolds.

For materials supplied by tipper truck or similar we would generally supply a drag link or walking floor system to move the material to the storage facility. Such systems typically incorporate a sunken mechanical transfer system with a in-feed hopper assembly.

Bulk Material Storage - External Silos



For high usage materials delivered to site by tanker or lorry we can offer bulk storage silos of varying capacity suitable for holding a variety of materials. Such storage facilities can be loaded either pneumatically or mechanically.

Bulk external silos can be supplied for raw material intake systems or for storage of finished product prior to its collection. Raw material silos are generally floor mounted and finished product silos are stillage mounted to permit direct loading of tankers below.

Silos are supplied with level detection systems and filtration units and can also incorporate de-humidification and drying systems together with trace heating and external lagging dependant upon the specific material requirements.



Bulk Material Storage - Internal Fabric Silos



For low density materials fabric silos can be utilised as an alternative to traditional steel storage vessels. This type of storage facility generally comprise of a steel support structure from which a woven polypropylene fabric bag is hung.

Fabric silos can be supplied in various shapes and sizes with volumes from 1M3 to over 60M3 and can incorporate numerous enhancements such a inspection windows filtration media and level monitoring systems.

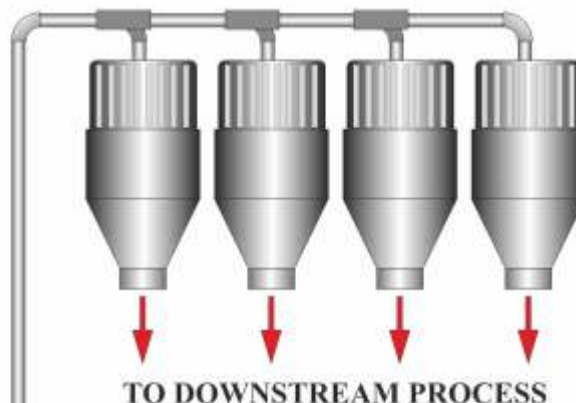
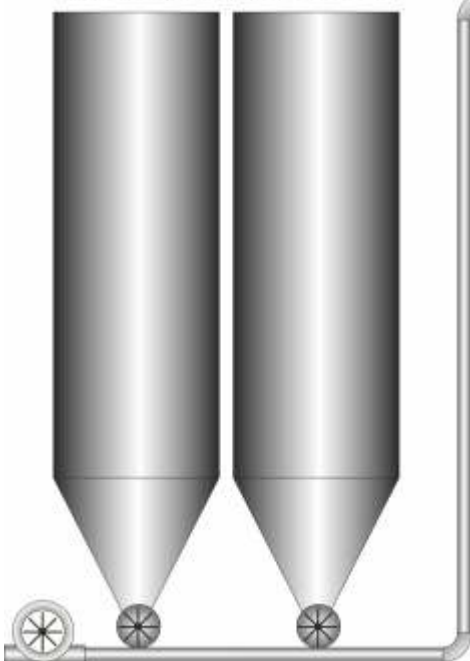


As with conventional steel storage vessels fabric hoppers can incorporate a variety of in-feed and discharge arrangements to suit the specific materials and process requirements.

For suitable material types and processes, fabric silos offer a relatively low cost alternative to steel vessels with much of the same functionality, however they do have the added advantage of being light weight and can be supplied on mobile frameworks.

Intermediate Storage & Process Feed

BULK STORAGE SILOS



In many instances bulk storage facilities are used to supply materials to internal intermediate storage hoppers or 'day bins'. These day bins are then utilised to feed a specific process or plant operation. Such systems generally provide automatic refilling of the intermediate storage hoppers either pneumatically or mechanically.

Intermediate storage facilities can be manufactured from both mild and stainless steel and include level detection and monitoring systems. Such storage facilities can be supplied to accommodate any required capacity and suit any specific downstream throughput via automated discharge valves and feeding devices.

Pneumatically fed hoppers are generally supplied with a reverse jet filter unit to remove transferred product from transferring air without expulsion of dust to atmosphere.

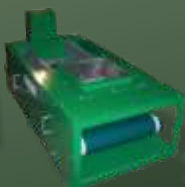


Tel: +44 (0) 1636 610792
Web: www.cjwaterhouse.co.uk
Email: sales@cjwaterhouse.co.uk

MATERIALS HANDLING ▼ WEIGHING SYSTEMS ▼ PROCESS SOLUTIONS
PLANT CONTROL ▼ AUTOMATION ▼ BESPOKE MACHINERY



Engineering Systems
& Machinery for Manufacturing
Industries



CJ Waterhouse Co Ltd